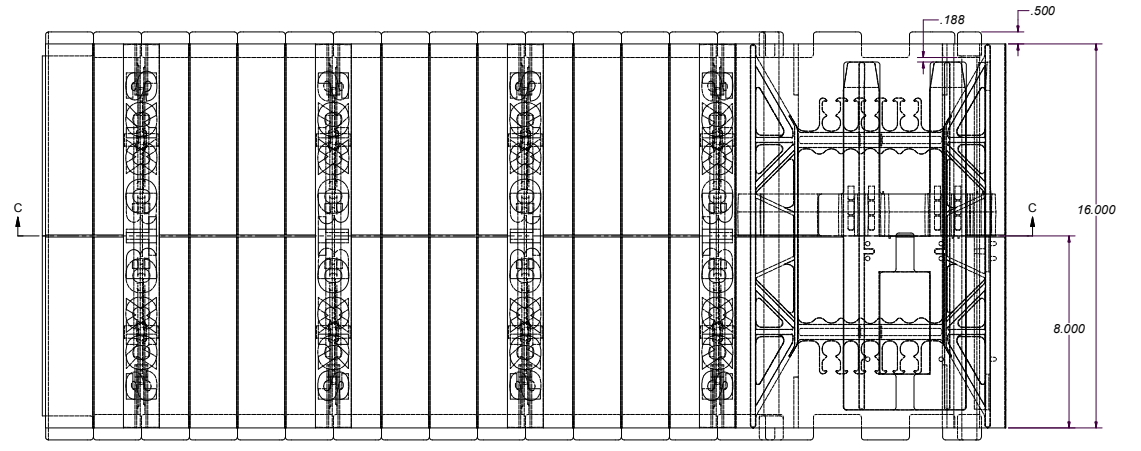
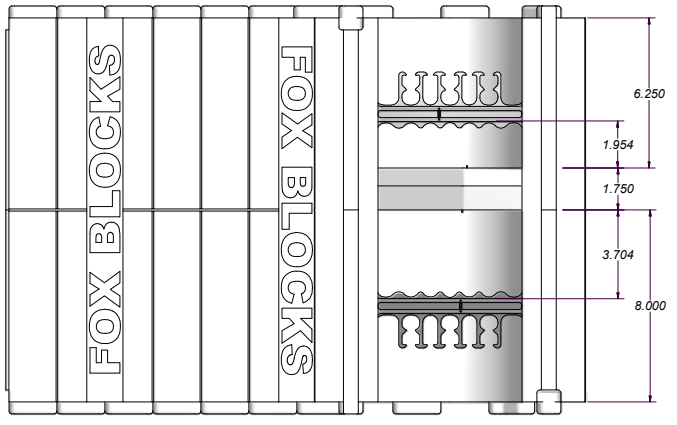
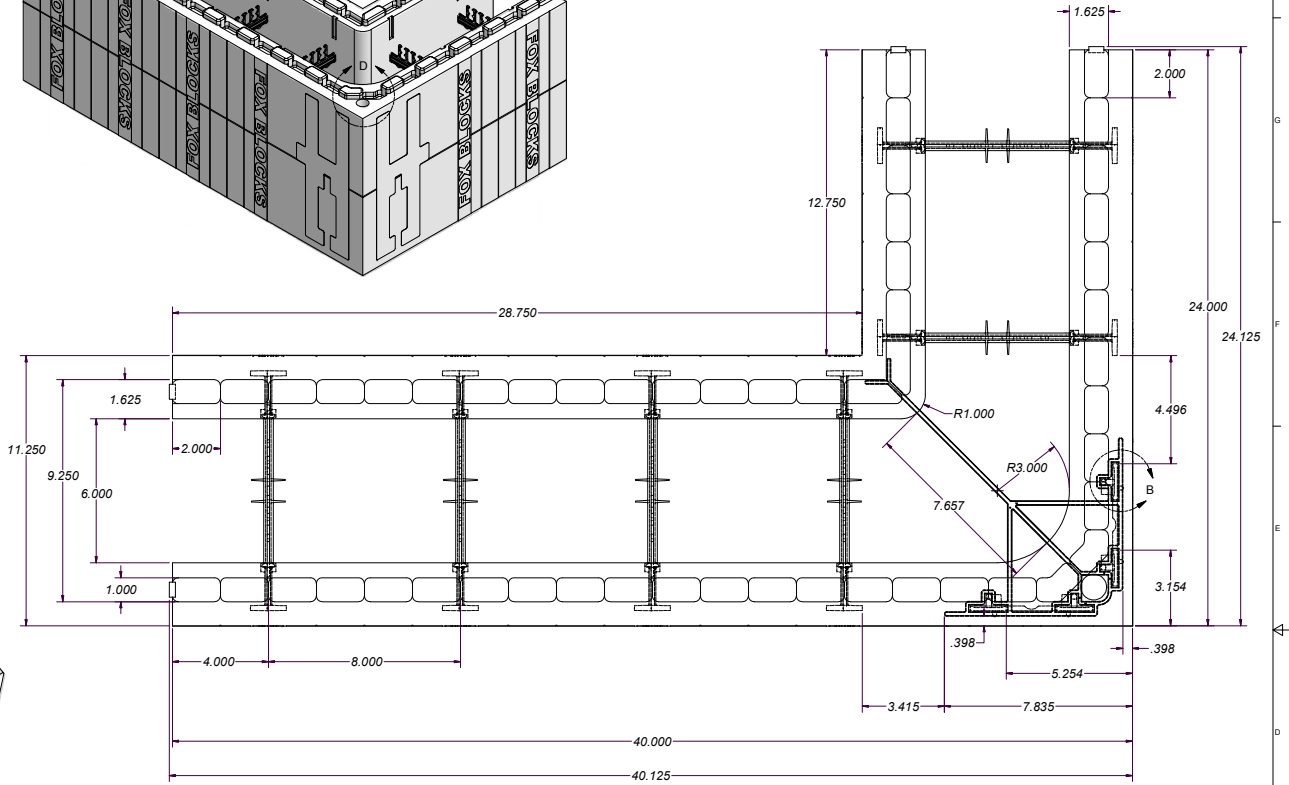
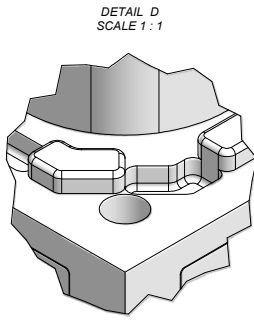
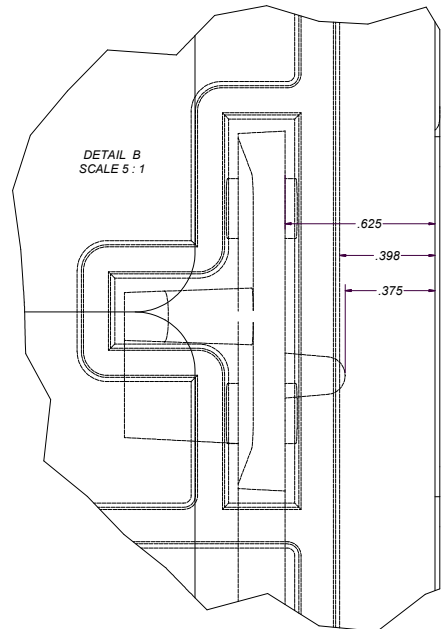


SHOP DRAWING APPROVED: YES NO
 SHOP DRAWING APPROVED AS NOTED: YES NO
 SHOP DRAWING RESUBMIT: YES NO
 AUTHORIZED SIGNATURE: _____
 DATE SUBMITTED: _____



THIS DRAWING, INCLUDING THE INFORMATION IT CONTAINS, IS THE PROPERTY OF AIRLITE PLASTICS COMPANY. THIS DRAWING IS LOANED STRICTLY ON THE CONDITION THAT IT WILL NOT BE REPRODUCED OR COPIED IN ANY MANNER, AND THAT THE INFORMATION IT CONTAINS WILL BE USED SOLELY IN CONNECTION WITH WORK BEING PERFORMED FOR, OR SPECIFICALLY AUTHORIZED IN WRITING BY, AIRLITE PLASTICS COMPANY.		AIRLITE PLASTICS COMPANY © 2004 AIRLITE PLASTICS COMPANY
DRAWN: JeffB SCALE: None PLOTTED: _____ EMPLOYMENT: _____ WEIGHT: _____ MATERIAL: E.P.S. / P.P.	DATE: 7/31/2009 GAP SHEET THICKNESS: _____ SHRINKAGE: _____ 2.58 cu. ft. of EPS 7.11 sq. ft. surface area - outside 4.61 sq. ft. surface area - inside 3.06 cu. ft. of concrete	AirLite Plastics Co. 6110 Abbott Drive, Omaha NE 68110-2865 6" ICF corner wall form CUSTOMER: Fox Blocks TITLE: Corner block assembly v2