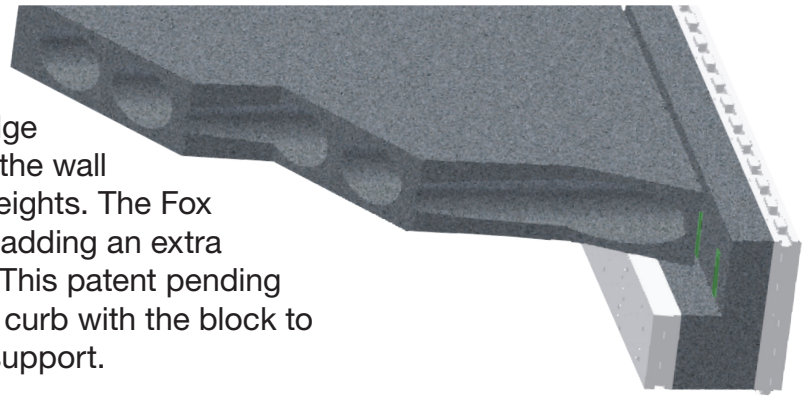


THE FOX CURB BLOCK

6110 Abbott Drive
Omaha, NE 68110
1-877-369-2562
www.foxblocks.com

00338A Tech Doc-Curb Block.pdf

There has always been a need for a block that can create a ledge to support floor systems within the wall without limiting you to course heights. The Fox Blocks team has solved this by adding an extra attachment point within the tie. This patent pending solution will allow you to form a curb with the block to support whatever you need to support.



USING THE CURB BLOCK:

1) INSTALLATION

See page two for proper steps using the curb block

2) SHAPES AVAILABLE WITH THE CURB BLOCK:

At this time 8" Straight and 8" 90° corner blocks are available with the curb block

3) RANGE OF USE:

The Curb Block can be cut down as low as 11" from the top of the block. You can also cut up as much as 11" from the bottom of the block to use when wrapping over concrete slab work. See page two for an example of this.

4) ESTIMATING:

Straight blocks = 4'-0" each.

Formula: (Total linear footage of wall - total linear footage taken up by 90° corners)/

4 = # of straight curb blocks

90° corner blocks = 5'-4" each.

Formula: Number of 90° turns = # of 90° corner blocks

5) IDENTIFICATION:

The Curb Block has been designed with a green tie for easy identification. By producing the ties in green, supply yards will be able to identify and send you the proper block. This will also ensure your crew will not use it up in the wall at the wrong time.

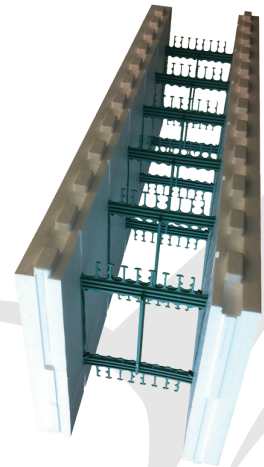
6) BUNDLE SIZES:

Straight block = 12 per bundle

90° corner block = 6 per bundle

7) EXCESS BLOCK?:

If you end up with extra Curb Block on site you can save for next job or simply use them up within the walls you are building. The shape and size of the Curb Block is identical to the normal straight and 90° corner blocks.



CURB BLOCK INSTALLATION & USES

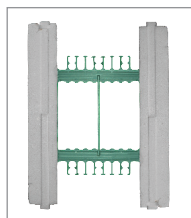
6110 Abbott Drive
Omaha, NE 68110
1-877-369-2562
www.foxblocks.com

00338A Tech Doc-Curb Block.pdf

INSTALLATION STEPS:

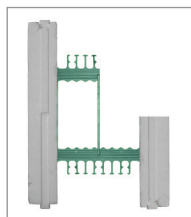
STEP 1

Separate Curb Block bundles and set aside until needed. You can identify the Curb Block by the green ties.



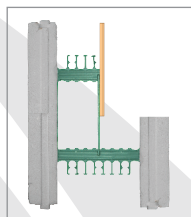
STEP 2

Decide where you need the concrete shelf elevation to land and either mark and rip-cut the block with a circular saw or set a fence on a table saw and make your cut. Finish cut but cutting the tie with a handsaw.



STEP 3

Attach forming to the Curb Block inner ties. Simply screw two #8 coarse threaded screws to each tie to withstand concrete pressure. Fox Blocks recommends the use of 1/2" or thicker plywood or equivalent.



STEP 4

Place concrete as normal. For best results Fox Blocks recommends proper consolidating entire wall including Curb Block.



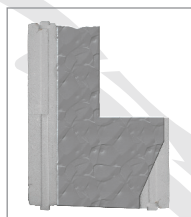
STEP 5

After sufficient curing remove form boards. You now have a solid concrete ledge for supporting what you need supported.



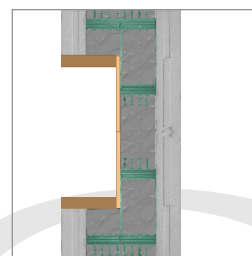
STEP 7

If you need extra support a taper can be cut prior to concrete placement to allow for up to a 6 1/4" ledge.



CURB BLOCK USES:

- Hollowcore
- Precast
- Dimensional Wood Floors
- Engineered Wood Floors
- Truss Floors
- Brick
- Garage Slabs
- Creating Recesses (See Below)
- Hambro Floors
- Pan Deck



EXAMPLE OF A WALL RECESS

This type of application will be treated as an opening in the wall and will require extra reinforcing within the concrete (rebar). The Curb Block will allow openings up to 22" in height using two blocks.



WOOD FLOORS

For the real life example above we cut off 6" from the left side, turned the cut-off over and connected to the right side creating a 12" curb. This works well with wood floors giving you ultra strength without any concerns of moisture in the future.